

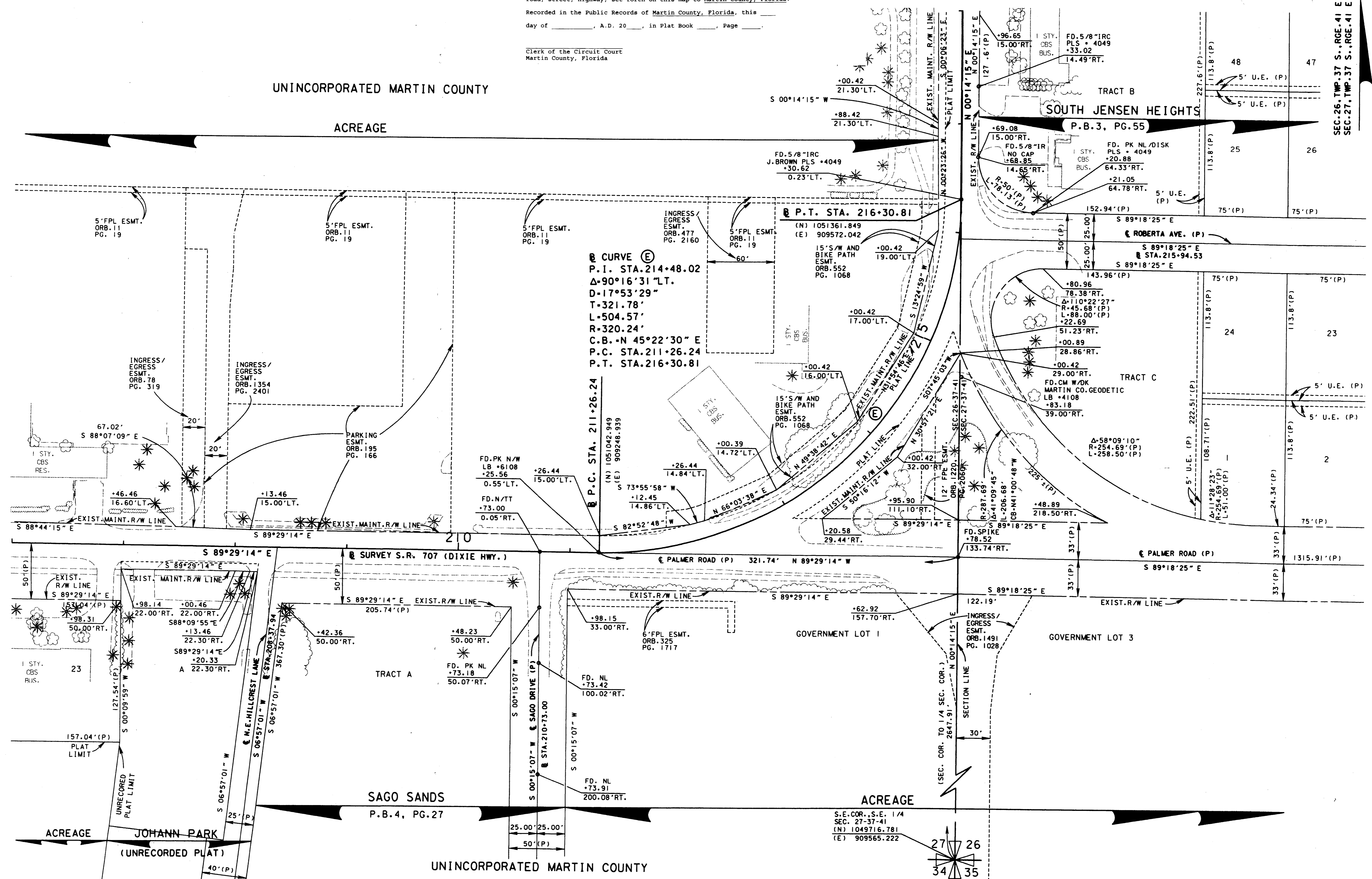
This Right of Way Map when recorded is an instrument of conveyance, transferring in accordance with the Florida Statutes 337.29 (3) all right, title, and interest of the Florida Department of Transportation in the road, street, highway, set forth on this map to Martin County, Florida.

Recorded in the Public Records of Martin County, Florida, this day of _____, A.D. 20____, in Plat Book _____, Page _____.

Clerk of the Circuit Court
Martin County, Florida

UNINCORPORATED MARTIN COUNTY

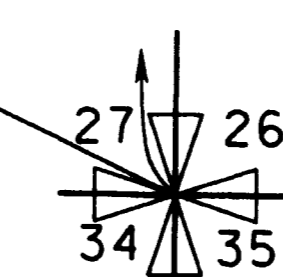
ACREAGE



SEC. 26, TWP. 37 S., RGE. 41 E.
SEC. 27, TWP. 37 S., RGE. 41 E.

SCALE: 1" = 40'

ACREAGE
S.E. COR., S.E. 1/4
SEC. 27-37-41
(N) 1049716.781
(E) 909565.222



MAINTENANCE MAP

FLORIDA DEPARTMENT OF TRANSPORTATION
RIGHT OF WAY MAPPING

APPROVED BY: *J. Smith*
DISTRICT RIGHT OF WAY SURVEYOR

REVISION	BY	DATE	REVISION	BY	DATE

SEE SHEET 1 FOR LEGEND AND GENERAL NOTES

FED. PROJ. NO. N/A
SECTION 89030-MAINT. (4)
STATE ROAD 707 (DIXIE HWY.) MARTIN COUNTY

STATE ROAD 707 (DIXIE HWY.)
FROM SAVANNAH ROAD TO ARCH STREET

MAPS PREPARED BY: LB-696
KIMLEY-HORN AND ASSOCIATES
FIELD BOOK NO. 5
SEE SHEET 1
W.P.I. No. N/A
SCALE: 1" = 40'
ITEM/SEGMENT NO. 4035911
SHEET 11 OF 12